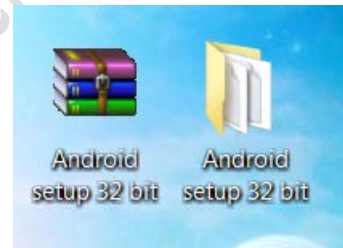
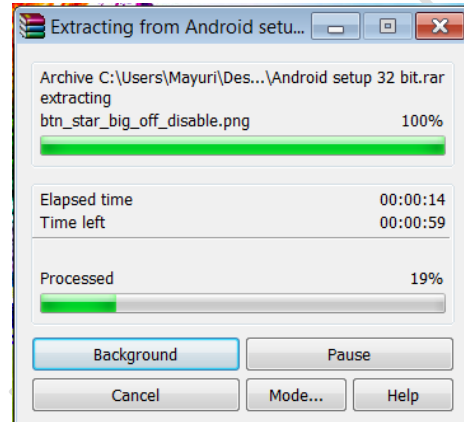
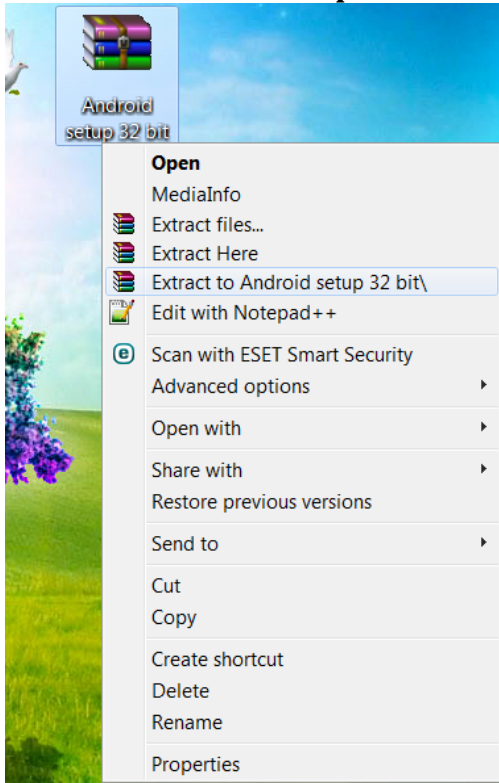


Step By Step Guide For Using Android Eclipse Bundle(Windows)

Things required for Android setup

1. JDK setup
2. Android adt bundle

Extract the downloaded zip file.



Inside it you will see following folders :

android-17	05/02/2015 10:51 ...	File folder	
android-19	05/02/2015 10:50 ...	File folder	
adt-bundle-windows-x86-20130522	09/06/2013 12:31 ...	WinRAR ZIP archive	436,266 KB
Android Installation steps	05/01/2015 7:40 A...	TXT File	1 KB
FAQ_during_Android_Installation	09/05/2015 10:28 ...	TXT File	2 KB
jdk-7u21-windows-i586	27/05/2013 10:46 ...	Application	91,114 KB

Steps for installing android:

1. First install java by installing JDK Setup file.

You can find the application file of jdk in this folder.

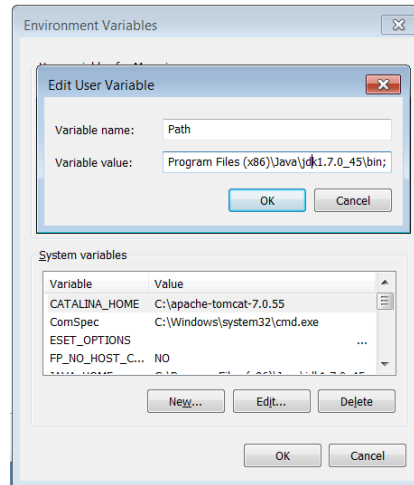
Android setup 32 bit\jdk-7u21-windows-i586.jar

Double-Click and run it.

If pre-installed jdk is 64 bit and is giving problem while installing this jdk, then remove it.

Then after installing, check whether jdk is in the path.

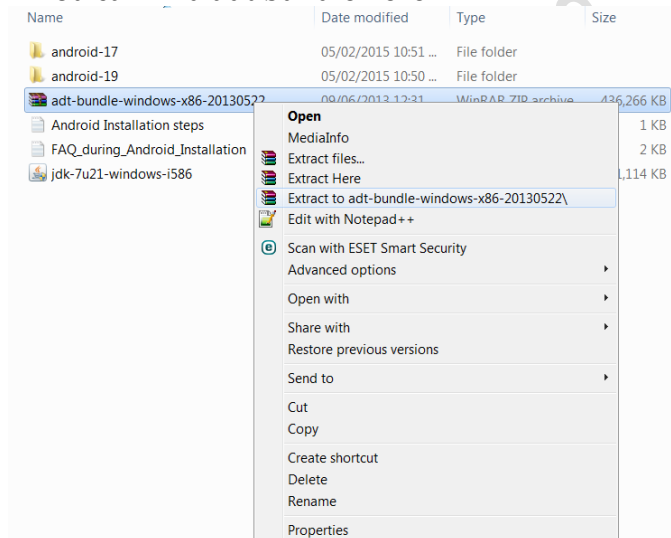
Start > Right Click on Computer > Properties> Advanced System Settings>Advanced> Environmental Variables
Double Click on Path.



Test whether jdk is installed perfectly or not.
Type following command in command prompt.

```
javac -version // this will check your jdk version if you installed
```

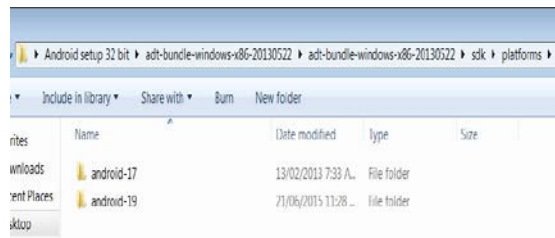
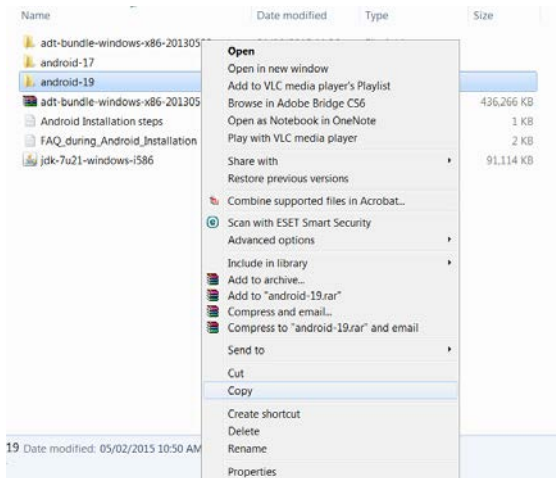
2. You can find adt bundle here:



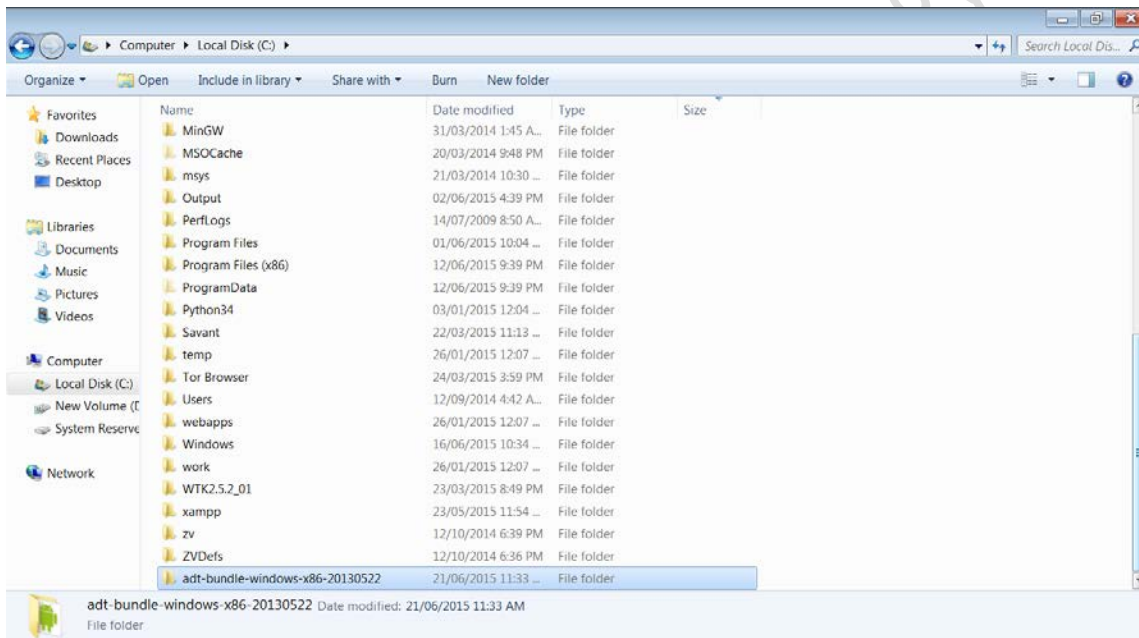
Extract it.

Copy android-19 to

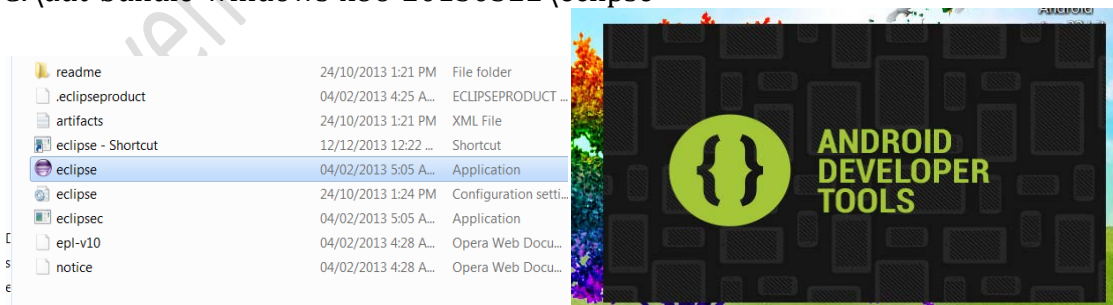
Android setup 32 bit\adt-bundle-windows-x86-20130522\adt-bundle-windows-x86-20130522\sdk\platforms



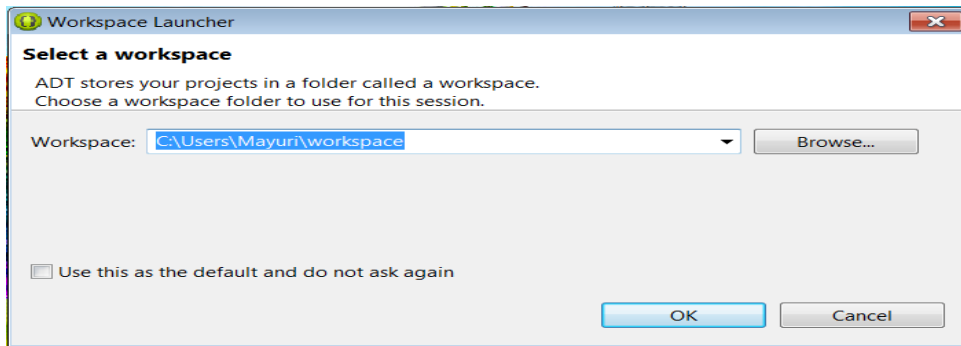
Copy extracted folder adt-bundle-windows-x86-20130522 to C drive.



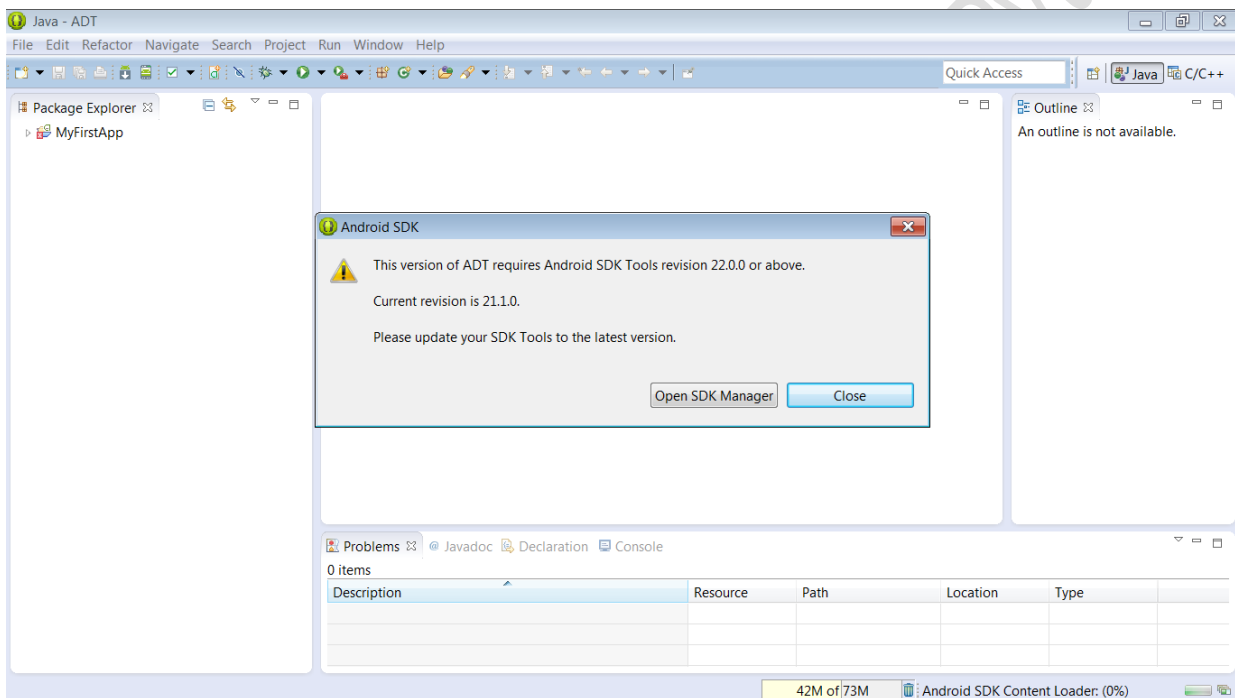
3. After copying adt, Go to eclipse folder and run eclipse.
C:\adt-bundle-windows-x86-20130522\eclipse



For more details on becoming Android Certified Programmer visit <http://android.suvenconsultants.com>

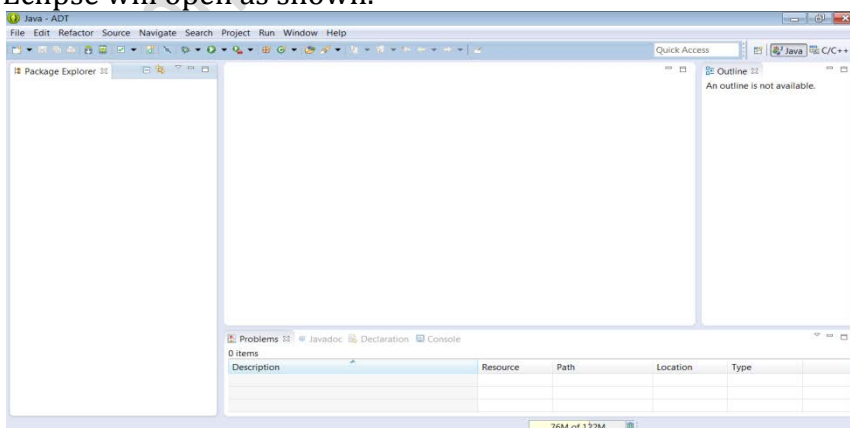


Choose the workspace, where you want to store your projects and click OK.



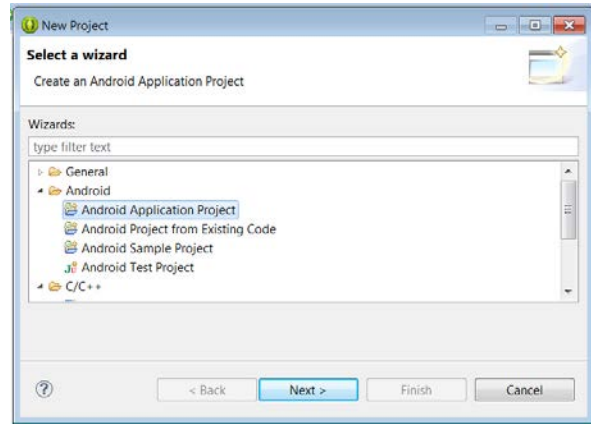
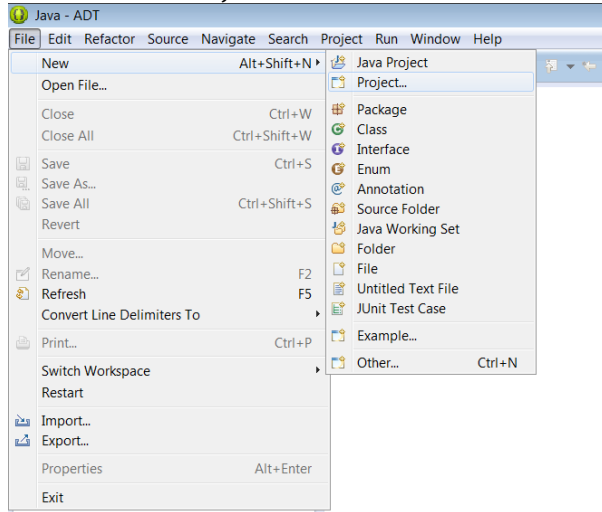
It will show you this message. ** Ignore it and do not update you eclipse to 22. Click on close.

Eclipse will open as shown.

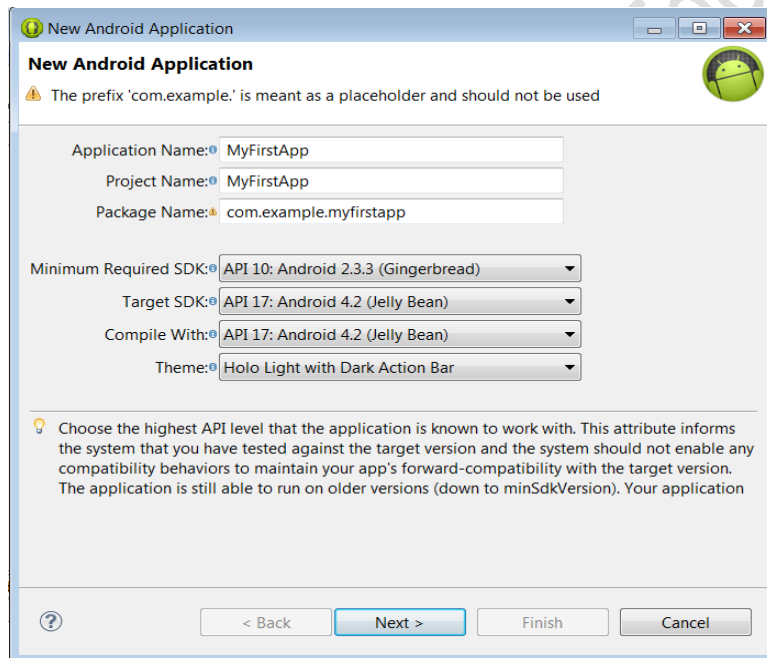


For more details on becoming Android Certified Programmer visit <http://android.suvenconsultants.com>

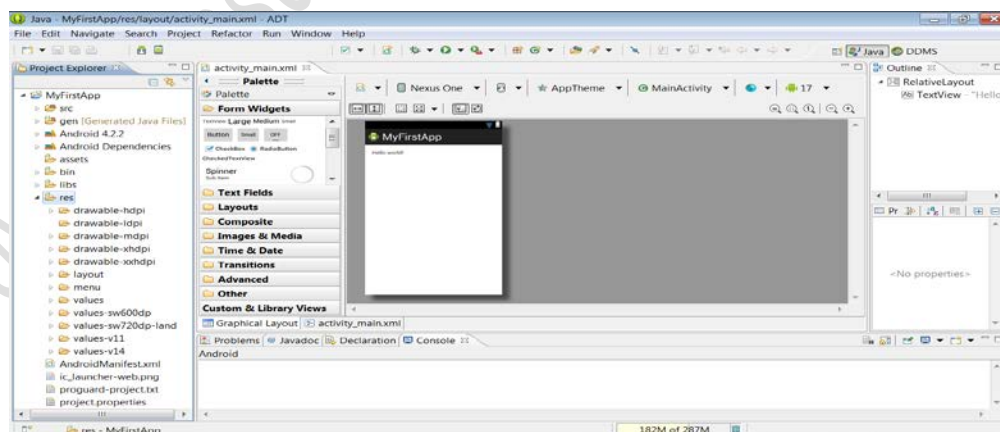
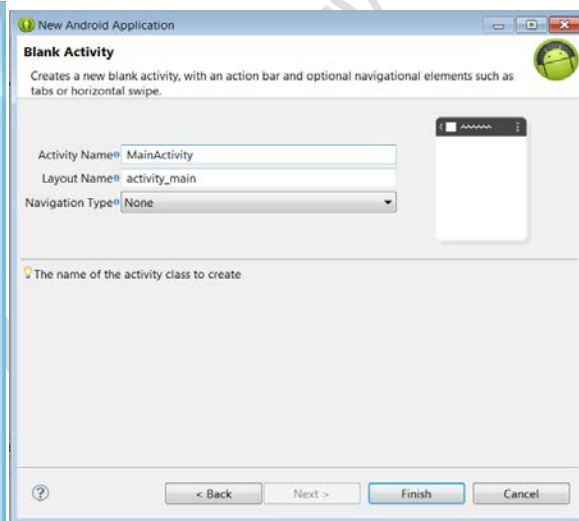
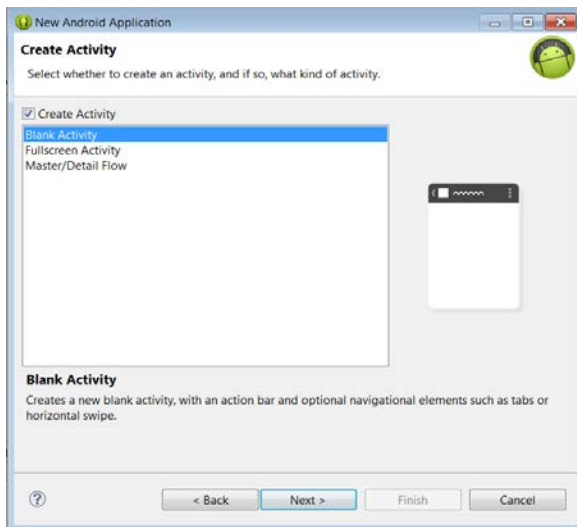
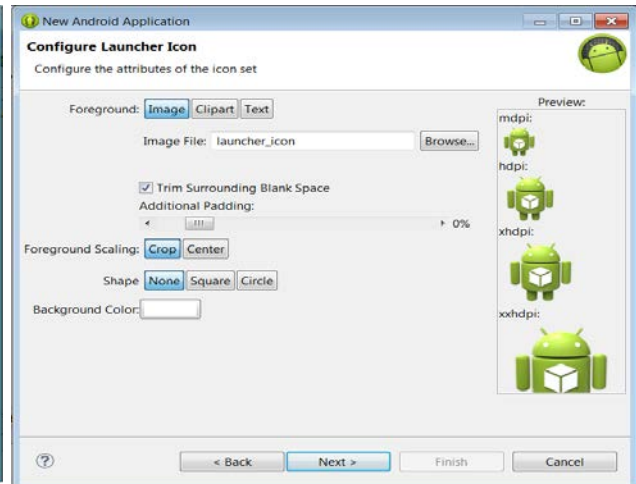
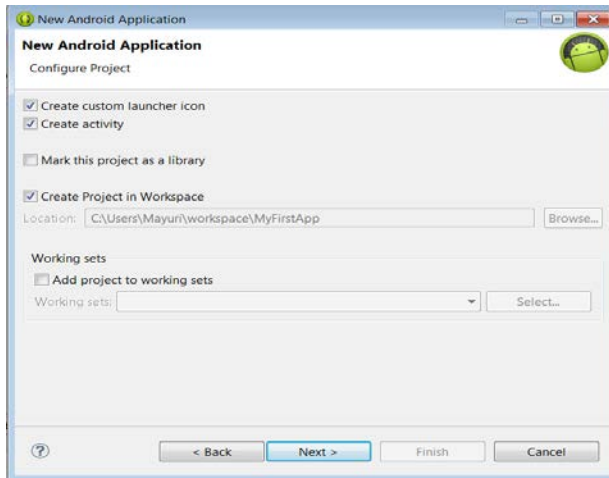
4. Creating a new Project in Eclipse: In Eclipse- File->New->Project



Click Next.



Fill the details of your project as given, click next.



So, your project is created in eclipse. Finish.

For more details on becoming Android Certified Programmer visit <http://android.suvenconsultants.com>

Note: JDK given in both zip is 32 bit which will work on both 32 bit and 64 bit eclipse. But if you are using pre-installed jdk, then make sure that you are not using 64 bit jdk for 32 bit eclipse. In such case you will require 64 bit eclipse. Otherwise 32 bit eclipse bundle will work on both 32-bit and 64-bit PCs , provided jdk used is 32 bit.

FAQ - During Android Installation :

1) How to set the path of the SDK in the Eclipse?

Soln: In the Eclipse, Go to top & Click Window -> Preferences -> From the left click Android option -> Browse & give your SDK path-> Apply -> OK

2) While importing project getting Red cross on the project?

Soln: Select your project then from the top click Project -> Clean -> OK.

OR

Right click project -> Build Path -> configure Build Path -> select Android from the left -> select highest API from the project Build Target -> Apply -> OK.

3) While running the project on the Emulator, Emulator getting launched failed?

Soln: Go to AVD manager and give your emulator RAM size of 256 MB.

OR

step 1: Close the Eclipse and emulator.

step 2: Go to the Task Manager and kill the "adb.exe" process.

step 3: Restart the eclipse and try launching the project again.

4) In the middle of the project , if R.java file gets deleted?

Soln: In the Eclipse, Select your project then from the top click Project -> Clean -> OK.

5) How to import external Libraries in the Eclipse?

Soln:

Go to File -> Import -> Select Existing Android Code into workspace -> Next -> Browse & give the path of reqd library -> Ok -> Tick the option "Copy Projects into Workspace" -> Finish.

6) How to find out whether your pc is 32bit or 64bit?

Soln: Start->Right Click on Computer->Properties->System-type